

World Journal of *Cardiology*

World J Cardiol 2022 July 26; 14(7): 382-445



MINIREVIEWS

- 382 COVID-19 vaccine-associated myocarditis
Morgan MC, Atri L, Harrell S, Al-Jaroudi W, Berman A
- 392 Heart failure in general and cardiac transplant patients with COVID-19
Sharma M, Jagirdhar GSK, Guntupalli KK, Kashyap R, Surani S

ORIGINAL ARTICLE**Retrospective Cohort Study**

- 403 Is there a window of opportunity to optimize trastuzumab cardiac monitoring?
Rala de Paula BH, Costa METF, de Sousa CAM, Bines J

Observational Study

- 411 Vitamin d deficiency and metabolic syndrome: The joint effect on cardiovascular and all-cause mortality in the United States adults
Liu L, Cui S, Volpe SL, May NS, Sukumar D, DiMaria-Ghalili RA, Eisen HJ
- 427 National trend of heart failure and other cardiovascular diseases in people living with human immunodeficiency virus
Park DY, An S, Romero ME, Murthi M, Atluri R

LETTER TO THE EDITOR

- 438 Heart failure with reduced, mildly reduced, or preserved left ventricular ejection fraction: Has reasoning been lost?
Xanthopoulos A, Giamouzis G, Skoularigis J, Triposkiadis F

ABOUT COVER

Editorial Board Member of *World Journal of Cardiology*, Rostam Jalali, PhD, RN, Professor, Senior Researcher, Department of Nursing, Kermanshah University of Medical Sciences, Kermanshah 6718546392, Iran. ks_jalali@yahoo.com

AIMS AND SCOPE

The primary aim of *World Journal of Cardiology (WJC, World J Cardiol)* is to provide scholars and readers from various fields of cardiology with a platform to publish high-quality basic and clinical research articles and communicate their research findings online.

WJC mainly publishes articles reporting research results and findings obtained in the field of cardiology and covering a wide range of topics including acute coronary syndromes, aneurysm, angina, arrhythmias, atherosclerosis, atrial fibrillation, cardiomyopathy, congenital heart disease, coronary artery disease, heart failure, hypertension, imaging, infection, myocardial infarction, pathology, peripheral vessels, public health, Raynaud's syndrome, stroke, thrombosis, and valvular disease.

INDEXING/ABSTRACTING

The *WJC* is now abstracted and indexed in Emerging Sources Citation Index (Web of Science), PubMed, PubMed Central, Scopus, Reference Citation Analysis, China National Knowledge Infrastructure, China Science and Technology Journal Database, and Superstar Journals Database. The 2022 edition of Journal Citation Reports® cites the 2021 Journal Citation Indicator (JCI) for *WJC* as 0.35. The *WJC*'s CiteScore for 2021 is 0.9, and Scopus CiteScore rank 2021: Cardiology and Cardiovascular Medicine is 260/336.

RESPONSIBLE EDITORS FOR THIS ISSUE

Production Editor: *Hua-Ge Yu*; Production Department Director: *Xiang Li*; Editorial Office Director: *Jia-Ru Fan*.

NAME OF JOURNAL

World Journal of Cardiology

ISSN

ISSN 1949-8462 (online)

LAUNCH DATE

December 31, 2009

FREQUENCY

Monthly

EDITORS-IN-CHIEF

Ramdas G Pai, Dimitrios Tousoulis, Marco Matteo Ciccone, Pal Pacher

EDITORIAL BOARD MEMBERS

<https://www.wjnet.com/1949-8462/editorialboard.htm>

PUBLICATION DATE

July 26, 2022

COPYRIGHT

© 2022 Baishideng Publishing Group Inc

INSTRUCTIONS TO AUTHORS

<https://www.wjnet.com/bpg/gerinfo/204>

GUIDELINES FOR ETHICS DOCUMENTS

<https://www.wjnet.com/bpg/GerInfo/287>

GUIDELINES FOR NON-NATIVE SPEAKERS OF ENGLISH

<https://www.wjnet.com/bpg/gerinfo/240>

PUBLICATION ETHICS

<https://www.wjnet.com/bpg/GerInfo/288>

PUBLICATION MISCONDUCT

<https://www.wjnet.com/bpg/gerinfo/208>

ARTICLE PROCESSING CHARGE

<https://www.wjnet.com/bpg/gerinfo/242>

STEPS FOR SUBMITTING MANUSCRIPTS

<https://www.wjnet.com/bpg/GerInfo/239>

ONLINE SUBMISSION

<https://www.f6publishing.com>

Retrospective Cohort Study

Is there a window of opportunity to optimize trastuzumab cardiac monitoring?

Bruno Henrique Rala de Paula, Maria Eduarda Teixeira Ferro Costa, Carlos Augusto Moreira de Sousa, José Bines

Specialty type: Oncology

Provenance and peer review:

Invited article; Externally peer reviewed.

Peer-review model: Single blind

Peer-review report's scientific quality classification

Grade A (Excellent): 0

Grade B (Very good): 0

Grade C (Good): C, C

Grade D (Fair): 0

Grade E (Poor): 0

P-Reviewer: Pradhan A, India;

Wang Y, China

Received: December 23, 2021

Peer-review started: December 23, 2021

First decision: February 15, 2022

Revised: March 29, 2022

Accepted: June 17, 2022

Article in press: June 17, 2022

Published online: July 26, 2022



Bruno Henrique Rala de Paula, Sarah Cannon Research Institute, London W1G 6AD, United Kingdom

Maria Eduarda Teixeira Ferro Costa, Department of Cardiology, Hospital do Câncer III-Instituto Nacional de Câncer, Rio de Janeiro 20560-121, Brazil

Carlos Augusto Moreira de Sousa, Departamento de Tecnologias da Informação e Educação em Saúde (DTIES), da Faculdade de Ciências Médicas (FCM), na Universidade do Estado do Rio de Janeiro (UERJ), Rio de Janeiro 20550-170, Brazil

José Bines, Department of Medical Oncology, Instituto Nacional de Câncer, Rio de Janeiro 20560-121, Brazil

Corresponding author: Bruno Henrique Rala de Paula, MD, MSc, Research Fellow, Sarah Cannon Research Institute, 93 Harley Street Central, London W1G 6AD, United Kingdom. brunobhrp@hotmail.com

Abstract

BACKGROUND

It remains unclear whether the current arbitrary screening recommendations of trastuzumab-related cardiotoxicity provides an adequate balance between preventing heart damage and curtailing a curative treatment.

AIM

To determine the incidence rate and consequences of trastuzumab-induced cardiotoxicity as adjuvant treatment in a real-world scenario.

METHODS

We present a retrospective analysis of cardiac function measured by echocardiogram at baseline and every 3 mo during trastuzumab treatment. Cardiotoxicity was defined as a drop in left ventricular ejection fraction (LVEF) $\geq 10\%$ from baseline and/or any drop $< 50\%$.

RESULTS

Between January 2011 and December 2014, 407 patients were selected. Most (93.6%) were treated with an anthracycline followed by a taxane-based regimen and trastuzumab for 12 mo. Forty patients (9.8%) had cardiotoxicity. None of

them were symptomatic, and 28 (72.5%) completely recovered LVEF. Cardiotoxicity happened early as shown by LVEF measured on echocardiogram 2 to 4 as compared to 5 to 7 (odds ratio = 2.47, 95% confidence interval: 1.09, 5.63, $P = 0.024$). There were 54 deaths (13.3%) during the 70-mo follow-up period; 1 (0.2%) was attributed to late cardiotoxicity (4 years after treatment). The absence of symptomatic cardiotoxicity during trastuzumab treatment and moreover the early occurrence on the treatment period may translate into a strategy to evaluate less frequently.

CONCLUSION

We observed a 10% rate of asymptomatic cardiotoxicity, which mirrors the results from the large adjuvant trials. Despite being transient, an LVEF drop led to frequent treatment delays and interruptions. It remains unclear whether LVEF decline is predictive of late cardiotoxicity, and treatment efficacy is compromised.

Key Words: Cardiac toxicity; Ventricular Dysfunction; Heart failure; Trastuzumab; Breast cancer

©The Author(s) 2022. Published by Baishideng Publishing Group Inc. All rights reserved.

Core Tip: It remains unclear whether the current arbitrary screening recommendations for trastuzumab-related cardiotoxicity in early-stage HER2-positive breast cancer provides an adequate balance between preventing heart damage and curtailing a curative treatment. Real world data showed that despite a low rate of mainly early, asymptomatic and transient cardiotoxicity, treatment delays and interruptions occur due to these findings. The study results suggest optimization of cardiac monitoring after an initial period without a decrease in cardiac function.

Citation: Rala de Paula BH, Costa METF, de Sousa CAM, Bines J. Is there a window of opportunity to optimize trastuzumab cardiac monitoring? *World J Cardiol* 2022; 14(7): 403-410

URL: <https://www.wjgnet.com/1949-8462/full/v14/i7/403.htm>

DOI: <https://dx.doi.org/10.4330/wjc.v14.i7.403>

INTRODUCTION

Trastuzumab, a monoclonal antibody targeting HER2, represents a milestone in breast cancer treatment. The drug improves the progression-free and overall survival in metastatic and localized HER2-positive breast cancer[1,2]. Cardiotoxicity remains the most compromising side effect[3]. Myocardial HER2 receptors are associated with cardiac function protection physiologically[4]. Therefore, the drug administration could lead to a decrease in left ventricular ejection fraction (LVEF), usually reversible, although a few patients need to delay or permanently stop their ongoing treatment[4,5]. The incidence is around a quarter of patients receiving the drug, with a small percentage experiencing heart failure (1%-4%)[6]. Several factors can contribute, such as the chemotherapy regimen, particularly anthracycline, patient characteristics such as age, previous cardiovascular disease and low ejection fraction prior to treatment initiation[7].

Cardiotoxicity of anti-cancer treatment includes any toxicity affecting the heart[8] and suggested by biomarkers, such as decrease of LVEF or signs of heart failure[9]. Guidelines suggest a baseline pre-treatment evaluation and risk stratification, during treatment monitoring and post-treatment surveillance[2,10]. Although these recommendations mimic the schedules used in the clinical trials, the cardiac assessment was not supported by prospective data. Our study aimed to evaluate the cardiac function during trastuzumab treatment for early-stage breast cancer in a real-world scenario.

MATERIALS AND METHODS

Materials and methods

A retrospective chart review was performed using patient medical files from January 2010 to December 2014, at the Instituto Nacional de Cancer, Brazil. Patients had tissue confirmation of HER2-positive breast cancer, stage I to III, treatment with chemotherapy combined with and followed by trastuzumab. Exclusion criteria included loss to follow-up in less than 3 mo after treatment initiation.

Echocardiogram was performed at baseline and every 3 mo during trastuzumab treatment. It was performed by the same examiner and device [Siemens SONOLINE G 60, with P 4-2 cardiac probe (4.0-2.0 MHz)]. The analyses performed included the M-mode, 2D-mode, spectral doppler, color Doppler

and tissue doppler imaging. The cavities dimensions were obtained according to the recommendation of the American Society of Echocardiography[11]. LVEF was calculated though the Teichholz Formulae. Cardiotoxicity was defined as: a 10% drop in LVEF from the baseline echo, a drop below 50% or symptoms according to the New York Heart Association class III or IV[12,30].

The study was approved by the institutional review board and conducted in accordance with the Good Clinical Practice Guidelines and the Helsinki declaration.

Statistical analysis

Numerical variables were reported by central tendency measures, and categorical variables were represented by absolute frequency and percentages. A bar plot containing the percentage of cardiotoxicity detected by echocardiograms at each scheduled measurement was performed to describe differences between patients that developed cardiotoxicity. A univariate analysis using the χ^2 method for categorical variables and two sample *t*-test for continuous variables were initially performed to test the association between cardiotoxicity and potential confounders in clinical practice (age, comorbidities, body mass index).

To verify statistical differences in cardiotoxicity during the follow-up time, odds ratio was calculated to show differences in cardiac event odds in the beginning *vs* end of screening period. The prevalence ratio was calculated using the Wald[13] and Score[14] methods. The R statistical software was used to calculate the odds ratio and prevalence measures using the epiR package[15].

RESULTS

From 423 eligible patients, 16 were excluded (7 with metastatic disease and 9 lost to follow-up), with 407 remaining for the final analysis. The median age was 52 years, and the body mass index was 27.54 kg/m². The stage at presentation was predominantly stage III: 59.47%. Most tumors were invasive ductal carcinoma (98.64%), and an anthracycline followed by taxane-based regimen was the most common treatment (93.6%). Almost all patients received trastuzumab for the whole 1-year period (97.0%) (Table 1).

Forty patients (9.8%) had cardiotoxicity at a median time of 289 d (114-680 dc) from treatment initiation, and a wider variation of LVEF was seen in cardiotoxicity patients as shown by Figure 1. Although none of these patients were symptomatic, all of them had their treatment delayed due to the echocardiogram findings. Twenty-nine patients (72.5%) recovered the LVEF, for which the drug was restarted, and 11 (27.5%) had trastuzumab suspended. The rates of cardiotoxicity did not vary according to age ($P = 0.58$), comorbidities ($P = 0.81$) or body mass index ($P = 0.64$).

Cardiotoxicity occurred early, as shown in Figure 2. The prevalence in echocardiograms 2 to 4 was 2.7% against 1.1% prevalence ratio in echocardiograms 5 to 7. The odds of cardiotoxicity were 2.5 times higher when echocardiogram 2 to 4 were compared to echocardiogram 5 to 7 (odds ratio = 2.47, 95% confidence interval: 1.09, 5.63, $P = 0.024$). The median follow-up time was 70 mo, and there were 54 deaths (13.3%). Overall, survival did not vary according to cardiotoxicity ($P = 0.08$). One death (0.2%) was attributed to heart failure. However, it occurred 4 years after the end of trastuzumab treatment, possibly related to late anthracycline cardiotoxicity.

DISCUSSION

We showed a 9.8% cardiotoxicity rate detected by routine echocardiogram during trastuzumab-based treatment for early-stage breast cancer. To our knowledge, this is the largest real-world cohort reported in South America. Our results were similar to the ones presented by the large breast cancer adjuvant clinical trial 3, which varied from 6.0% to 35.4%[16,17]. This wide variation could be explained by the different chemotherapy regimens but more likely attributed to patient selection and diverse definitions of cardiotoxicity[18]. Whilst contemporary studies focus on predictive biomarkers (*i.e.* plasma levels of troponin and/or brain natriuretic peptide) and more costly imaging studies (*i.e.* cardiac magnetic resonance imaging), transthoracic echocardiogram is widely available with an affordable cost, which allows its widespread use[19]. Although the pathophysiology of cardiotoxicity is being elucidated, and players such as neuregulin[20] have been suggested. Reliable and validated biomarkers with a better cost-effectiveness than LVEF estimation are awaited[21].

Recommendations to withhold trastuzumab in Europe (absolute LVEF decrease > 20% or > 10% to < 50% or symptomatic heart failure)[22] and America (LVEF decrease \geq 16% from baseline or LVEF below institutional limits of normality and \geq 10% absolute LVEF decreased from baseline)[23] are roughly similar in not considering borderline asymptomatic decrease in LVEF. None of the patients in this cohort had symptoms at the time of the abnormal echocardiographic findings. Notwithstanding, it led to treatment delays and interruptions based on the guidelines available. The consequences of asymptomatic LVEF drop are unknown as well as whether early trastuzumab treatment interruption

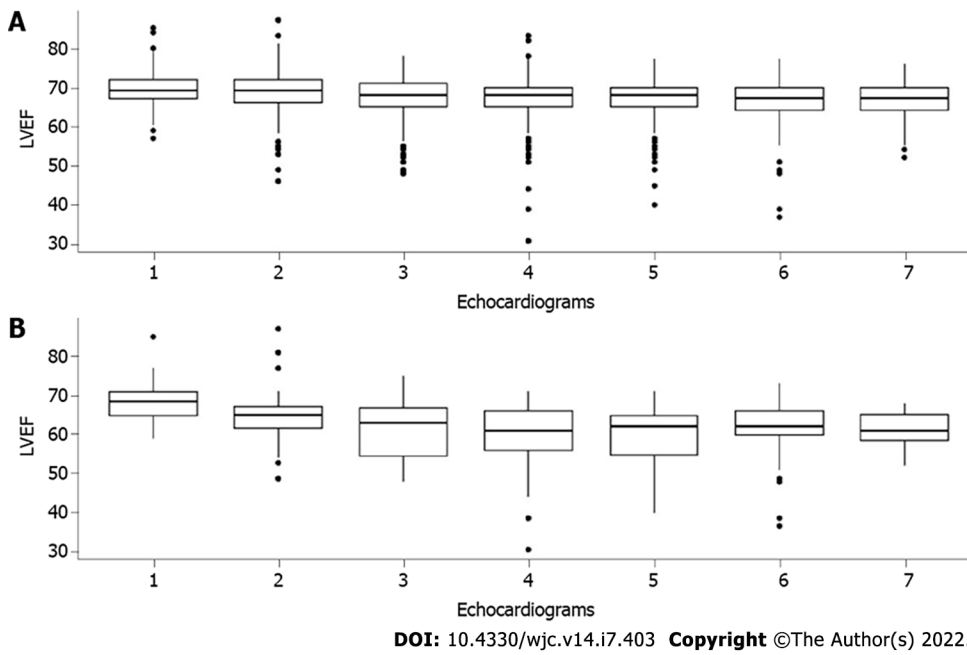


Figure 1 Left ventricular ejection fraction over trastuzumab cardiotoxicity monitor. A: Total sample; B: Cardiotoxicity group. LVEF: Left ventricular ejection fraction.

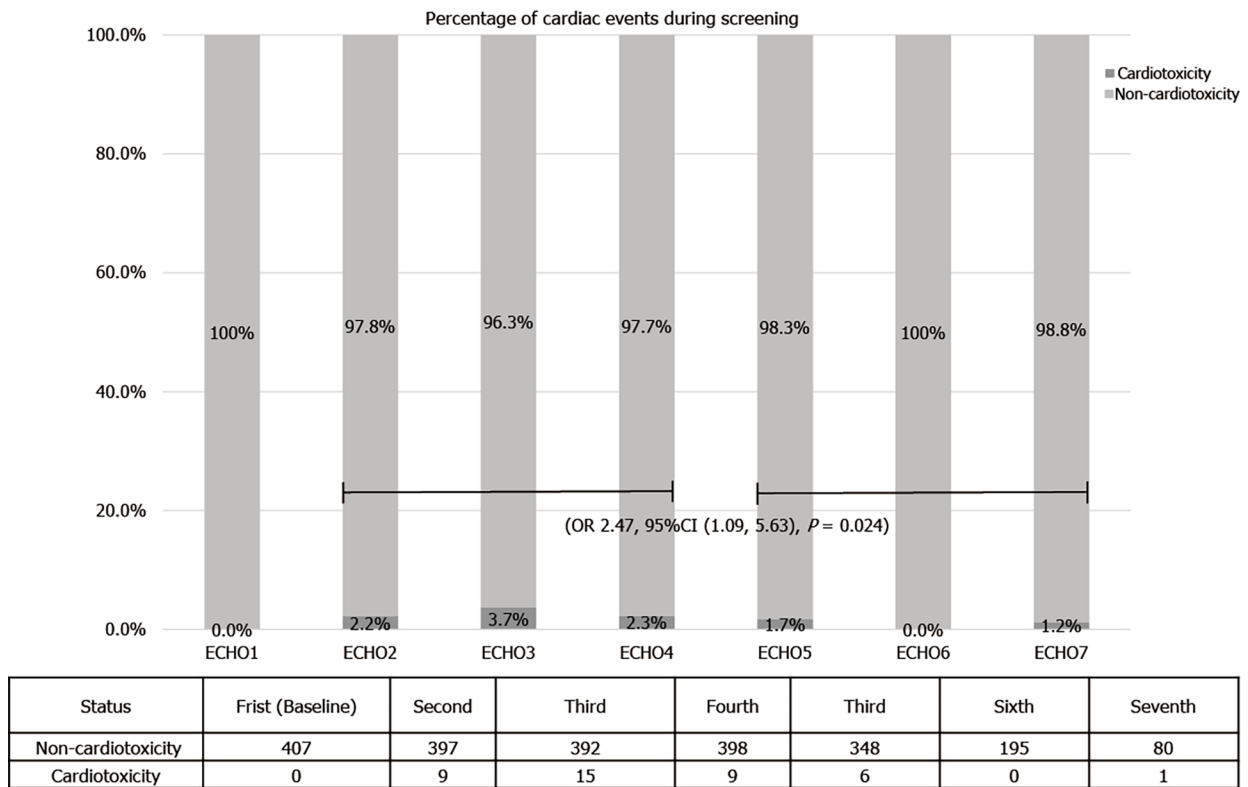


Figure 2 Percentage of cardiac event over time. OR: Odds ratio; CI: Confidence interval.

may compromise its efficacy[24,25]. More recent trials showed less clinical cardiac dysfunction in shorter trastuzumab treatment duration compared to longer trastuzumab treatment duration[26].

There are known risk factors associated with trastuzumab-related cardiotoxicity such as age above 65, Ile655Val HER2 polymorphism, previous cardiovascular disease, radiation therapy and the use of anthracycline, especially high cumulative doses[27,28]. In our cohort, we were unable to show such a correlation. The studies on the other hand are conflicting about other factors such as other comorbidities (diabetes or kidney function impaired) or baseline LVEF (high or low)[3]. We interpret these factors

Table 1 Patients and treatment characteristics

Variable	Absolute number	Percentage
Age		
Minimum	18	-
Median	52	-
Maximum	79	-
Body mass index		
Minimum	14.27	-
Median	27.54	-
Maximum	50.58	-
Comorbidities		
Hypertension	56	13.75
Diabetes	19	4.66
Lack of other comorbidities reported	330	81.10
Menopausal status		
Post-menopausal	304	74.69
Pre-menopausal	103	25.31
Histological subtypes		
Invasive ductal carcinoma	400	98.28
Invasive lobular carcinoma	5	1.22
Others	2	0.50
Clinical stage		
I	36	8.86
II	129	31.69
III	242	59.45
Chemotherapy regimen		
Anthracycline and taxane based	381	93.61
Non-anthracycline based	26	6.39
Chemotherapy purpose		
Neoadjuvant	204	50.12
Adjuvant	203	48.88
Adjuvant radiotherapy		
Yes	213	52.33
No	194	47.67
Trastuzumab duration		
1 yr	395	97.06
Less than 1 yr	12	2.94

with caution once the standard of care population is significantly heterogeneous and frequently differs from the subjects included in clinical trials. Moreover, specific recommendations to adapt cardiac monitoring is lacking, unless the patient has a high cardiotoxicity risk[29].

Of note, we showed an increased incidence of cardiotoxicity in the early monitoring as compared to the later cardiac function evaluation through echocardiogram. As there is a lack of prospective randomized clinical trials for optimal cardiac monitoring[30], our results provide an opportunity to such an endeavor. Our study limitations included its retrospective nature, the limited number of patients and the lack of standard reporting of comorbidities. On the other hand, similar studies suggest that a

population to optimize monitoring might exist[31].

CONCLUSION

The cardiotoxicity rates in a real-world population were similar to those reported by the large adjuvant trastuzumab trials. Most events occurred early during the initial monitoring examinations. As these findings led to treatment changes with unknown long-term consequences. These results deserve a prospective confirmation to assess the optimal way to monitor and manage trastuzumab-related cardiac events.

ARTICLE HIGHLIGHTS

Research background

It remains unclear whether the current arbitrary screening recommendations of trastuzumab-related cardiotoxicity provides an adequate balance between preventing heart damage and curtailing a curative treatment.

Research motivation

There is an urgent need to optimize monitoring of cardiotoxicity.

Research objectives

This study aimed to determine the incidence rate and consequences of trastuzumab-induced cardiotoxicity as adjuvant treatment in a real-world scenario.

Research methods

A retrospective chart review was performed using patient medical files during 5 years at a single institution in Brazil. Patients had tissue confirmation of HER2-positive breast cancer, stage I to III, treatment with chemotherapy combined with and followed by trastuzumab. Exclusion criteria included loss to follow-up in less than 3 mo after treatment initiation.

Research results

Forty patients (9.8%) had cardiotoxicity (out of 407 included). None of them were symptomatic, and 28 (72.5%) completely recovered left ventricular ejection fraction. Cardiotoxicity happened early as shown by left ventricular ejection fraction measured on echocardiogram 2 to 4 as compared to 5 to 7 (odds ratio = 2.47, 95% confidence interval: 1.09, 5.63, $P = 0.024$). There were 54 deaths (13.3%) during the 70-mo follow-up period; 1 (0.2%) was attributed to late cardiotoxicity (4 years after treatment).

Research conclusions

The absence of symptomatic cardiotoxicity during trastuzumab treatment and moreover the early occurrence on the treatment period may translate into a strategy to evaluate less frequent cardiac monitoring.

Research perspectives

This data alongside similar studies in the literature warrants a prospective evaluation of a de-escalation of cardiotoxicity monitoring in a selected population.

FOOTNOTES

Author contributions: Rala de Paula BH, Costa METF and Bines J contributed to data collection; Rala de Paula BH, de Sousa CAM and Bines J were in charge of statistical analysis; All authors participated in the study plan, paper writing and reviewing and approved the final manuscript.

Institutional review board statement: This work was approved by the Instituto Nacional de Cancer under the number 2.789.267.

Conflict-of-interest statement: All authors report no relevant conflicts of interest for this article.

Data sharing statement: Data can be shared under the regulations of Instituto Nacional de Cancer.

STROBE statement: The authors have read the STROBE Statement – checklist of items, and the manuscript was

prepared and revised according to the STROBE Statement – checklist of items.

Open-Access: This article is an open-access article that was selected by an in-house editor and fully peer-reviewed by external reviewers. It is distributed in accordance with the Creative Commons Attribution NonCommercial (CC BY-NC 4.0) license, which permits others to distribute, remix, adapt, build upon this work non-commercially, and license their derivative works on different terms, provided the original work is properly cited and the use is non-commercial. See: <https://creativecommons.org/licenses/by-nc/4.0/>

Country/Territory of origin: Brazil

ORCID number: Bruno Henrique Rala de Paula 0000-0001-6427-229X; José Bines 0000-0003-2465-8854.

S-Editor: Wu YXJ

L-Editor: Filipodia A

P-Editor: Wu YXJ

REFERENCES

- 1 **Slamon DJ**, Leyland-Jones B, Shak S, Fuchs H, Paton V, Bajamonde A, Fleming T, Eiermann W, Wolter J, Pegram M, Baselga J, Norton L. Use of chemotherapy plus a monoclonal antibody against HER2 for metastatic breast cancer that overexpresses HER2. *N Engl J Med* 2001; **344**: 783-792 [PMID: 11248153 DOI: 10.1056/NEJM200103153441101]
- 2 National Comprehensive Cancer Network (nccn) NCCN Clinical Practice Guidelines in Oncology: Breast Cancer Ver. 1.2019. (2019) Fort Washington, PA: NCCN. Available from: https://www.nccn.org/professionals/physician_gls/pdf/breast.pdf
- 3 **Onitilo AA**, Engel JM, Stankowski RV. Cardiovascular toxicity associated with adjuvant trastuzumab therapy: prevalence, patient characteristics, and risk factors. *Ther Adv Drug Saf* 2014; **5**: 154-166 [PMID: 25083270 DOI: 10.1177/2042098614529603]
- 4 **Hudis CA**. Trastuzumab--mechanism of action and use in clinical practice. *N Engl J Med* 2007; **357**: 39-51 [PMID: 17611206 DOI: 10.1056/NEJMra043186]
- 5 **Florescu M**, Cinteza M, Vinereanu D. Chemotherapy-induced Cardiotoxicity. *Maedica (Bucur)* 2013; **8**: 59-67 [PMID: 24023601]
- 6 **Yu AF**, Flynn JR, Moskowitz CS, Scott JM, Oeffinger KC, Dang CT, Liu JE, Jones LW, Steingart RM. Long-term Cardiopulmonary Consequences of Treatment-Induced Cardiotoxicity in Survivors of ERBB2-Positive Breast Cancer. *JAMA Cardiol* 2020; **5**: 309-317 [PMID: 31939997 DOI: 10.1001/jamacardio.2019.5586]
- 7 **Armenian SH**, Lacchetti C, Lenihan D. Prevention and Monitoring of Cardiac Dysfunction in Survivors of Adult Cancers: American Society of Clinical Oncology Clinical Practice Guideline Summary. *J Oncol Pract* 2017; **13**: 270-275 [PMID: 27922796 DOI: 10.1200/JOP.2016.018770]
- 8 **National Cancer Institute**. Bethesda, MD: NCI Dictionaries; [cited March 29 2022]. Available from: <https://www.cancer.gov/publications/dictionaries/cancer-terms/def/cardiotoxicity>
- 9 **Bovelli D**, Plataniotis G, Roila F; ESMO Guidelines Working Group. Cardiotoxicity of chemotherapeutic agents and radiotherapy-related heart disease: ESMO Clinical Practice Guidelines. *Ann Oncol* 2010; **21** Suppl 5: v277-v282 [PMID: 20555097 DOI: 10.1093/annonc/mdq200]
- 10 **Zamorano JL**, Lancellotti P, Rodriguez Muñoz D, Aboyans V, Asteggiano R, Galderisi M, Habib G, Lenihan DJ, Lip GY, Lyon AR, Lopez Fernandez T, Mohty D, Piepoli MF, Tamargo J, Torbicki A, Suter TM, Zamorano JL, Achenbach S, Agewall S, Badimon L, Barón-Esquivias G, Baumgartner H, Bax JJ, Bueno H, Carerj S, Dean V, Erol Ç, Fitzsimons D, Gaemperli O, Kirchhof P, Kolh P, Nihoyannopoulos P, Ponikowski P, Roffi M, Vaz Carneiro A, Windecker S; Authors/Task Force Members; ESC Committee for Practice Guidelines (CPG); Document Reviewers. 2016 ESC Position Paper on cancer treatments and cardiovascular toxicity developed under the auspices of the ESC Committee for Practice Guidelines: The Task Force for cancer treatments and cardiovascular toxicity of the European Society of Cardiology (ESC). *Eur J Heart Fail* 2017; **19**: 9-42 [PMID: 27565769 DOI: 10.1002/ehfj.654]
- 11 **Lang RM**, Badano LP, Mor-Avi V, Afilalo J, Armstrong A, Ernande L, Flachskampf FA, Foster E, Goldstein SA, Kuznetsova T, Lancellotti P, Muraru D, Picard MH, Rietzschel ER, Rudski L, Spencer KT, Tsang W, Voigt JU. Recommendations for cardiac chamber quantification by echocardiography in adults: an update from the American Society of Echocardiography and the European Association of Cardiovascular Imaging. *Eur Heart J Cardiovasc Imaging* 2015; **16**: 233-270 [PMID: 25712077 DOI: 10.1093/ehjci/jev014]
- 12 **Dolgin M**; Association NYH, Fox AC, Gorlin R, Levin RI; New York Heart Association. Criteria Committee. Nomenclature and criteria for diagnosis of diseases of the heart and great vessels. 9th ed. Boston, MA: Lippincott Williams and Wilkins; 1994
- 13 **Wald A**. Tests of statistical hypotheses concerning several parameters when the number of observations is large. *Trans Am Math Soc* 1943; **54**: 426-482 [DOI: 10.1090/S0002-9947-1943-0012401-3]
- 14 **Miettinen O**, Nurminen M. Comparative analysis of two rates. *Stat Med* 1985; **4**: 213-226 [PMID: 4023479 DOI: 10.1002/sim.4780040211]
- 15 **R Core Team**. R: A language and environment for statistical computing. R Foundation for Statistical Computing, Vienna, Austria. (2019). Available from: <https://www.Rproject.org/>
- 16 **Joensuu H**, Kellokumpu-Lehtinen PL, Bono P, Alanko T, Kataja V, Asola R, Utriainen T, Kokko R, Hemminki A, Tarkkanen M, Turpeenniemi-Hujanen T, Jyrkkö S, Flander M, Helle L, Ingalsuo S, Johansson K, Jääskeläinen AS,

- Pajunen M, Rauhala M, Kaleva-Kerola J, Salminen T, Leinonen M, Elomaa I, Isola J; FinHer Study Investigators. Adjuvant docetaxel or vinorelbine with or without trastuzumab for breast cancer. *N Engl J Med* 2006; **354**: 809-820 [PMID: 16495393 DOI: 10.1056/NEJMoa053028]
- 17 **Spielmann M**, Roché H, Delozier T, Canon JL, Romieu G, Bourgeois H, Extra JM, Serin D, Kerbrat P, Machiels JP, Lortholary A, Orfeuvre H, Campone M, Hardy-Bessard AC, Coudert B, Maerevoet M, Piot G, Kramar A, Martin AL, Penault-Llorca F. Trastuzumab for patients with axillary-node-positive breast cancer: results of the FNCLCC-PACS 04 trial. *J Clin Oncol* 2009; **27**: 6129-6134 [PMID: 19917839 DOI: 10.1200/JCO.2009.23.0946]
- 18 **Chung R**, Ghosh AK, Banerjee A. Cardiotoxicity: precision medicine with imprecise definitions. *Open Heart* 2018; **5**: e000774 [PMID: 30094034 DOI: 10.1136/openhrt-2018-000774]
- 19 **Dang CT**, Yu AF, Jones LW, Liu J, Steingart RM, Argolo DF, Norton L, Hudis CA. Cardiac Surveillance Guidelines for Trastuzumab-Containing Therapy in Early-Stage Breast Cancer: Getting to the Heart of the Matter. *J Clin Oncol* 2016; **34**: 1030-1033 [PMID: 26834055 DOI: 10.1200/JCO.2015.64.5515]
- 20 **Cote GM**, Sawyer DB, Chabner BA. ERBB2 inhibition and heart failure. *N Engl J Med* 2012; **367**: 2150-2153 [PMID: 23190227 DOI: 10.1056/NEJMcibr1203156]
- 21 **de Paula BDHR**, Bandeira, LLB, Ramos AP, Pinheiro BLM, Ferreira RM, de Oliveira Araújo II, da Costa PCV, Crocamo S. Contemporaneous Screening Options of Cardiotoxicity Related to Oncological Treatment. *Revista Brasileira de Cancerologia* 2019; **65**: 07388 [DOI: 10.32635/2176-9745.RBC.2019v65n3.388]
- 22 **Curigliano G**, Lenihan D, Fradley M, Ganatra S, Barac A, Blaes A, Herrmann J, Porter C, Lyon AR, Lancellotti P, Patel A, DeCara J, Mitchell J, Harrison E, Moslehi J, Witteles R, Calabro MG, Orecchia R, de Azambuja E, Zamorano JL, Krone R, Iakobishvili Z, Carver J, Armenian S, Ky B, Cardinale D, Cipolla CM, Dent S, Jordan K; ESMO Guidelines Committee. Electronic address: clinicalguidelines@esmo.org. Management of cardiac disease in cancer patients throughout oncological treatment: ESMO consensus recommendations. *Ann Oncol* 2020; **31**: 171-190 [PMID: 31959335 DOI: 10.1016/j.annonc.2019.10.023]
- 23 **Kondapalli L**. Cardiotoxicity: an unexpected consequence of HER2-targeted therapies. 2021. Available from: <https://www.acc.org/Latest-in-cardiology/articles/2016/06/06/09/32/cardiotoxicity>
- 24 **Moilanen T**, Jokimäki A, Tenhunen O, Koivunen JP. Trastuzumab-induced cardiotoxicity and its risk factors in real-world setting of breast cancer patients. *J Cancer Res Clin Oncol* 2018; **144**: 1613-1621 [PMID: 29872916 DOI: 10.1007/s00432-018-2682-9]
- 25 **Gong IY**, Verma S, Yan AT, Ko DT, Earle CC, Tomlinson GA, Trudeau ME, Krahn MD, Krzyzanowska MK, Brezden-Masley CB, Gavura S, Peacock S, Chan KK. Long-term cardiovascular outcomes and overall survival of early-stage breast cancer patients with early discontinuation of trastuzumab: a population-based study. *Breast Cancer Res Treat* 2016; **157**: 535-544 [PMID: 27271767 DOI: 10.1007/s10549-016-3823-y]
- 26 **Earl HM**, Hiller L, Vallier AL, Loi S, McAdam K, Hughes-Davies L, Harnett AN, Ah-See ML, Simcock R, Rea D, Raj S, Woodings P, Harries M, Howe D, Raynes K, Higgins HB, Wilcox M, Plummer C, Mansi J, Gounaris I, Mahler-Araujo B, Provenzano E, Chhabra A, Abraham JE, Caldas C, Hall PS, McCabe C, Hulme C, Miles D, Wardley AM, Cameron DA, Dunn JA; PERSEPHONE Steering Committee and Trial Investigators. 6 vs 12 mo of adjuvant trastuzumab for HER2-positive early breast cancer (PERSEPHONE): 4-year disease-free survival results of a randomised phase 3 non-inferiority trial. *Lancet* 2019; **393**: 2599-2612 [PMID: 31178152 DOI: 10.1016/S0140-6736(19)30650-6]
- 27 **Pondé NF**, Lambertini M, de Azambuja E. Twenty years of anti-HER2 therapy-associated cardiotoxicity. *ESMO Open* 2016; **1**: e000073 [PMID: 27843627 DOI: 10.1136/esmooopen-2016-000073]
- 28 **Miller L**. Searching for the Key to Trastuzumab Cardiotoxicity in HER2+ Breast Cancer Targeted therapies in oncology February 2017, published online in March 2017. Available from: <https://www.targetedonc.com/publications/targeted-therapynews/2017/february-2017/searching-for-the-key-to-trastuzumab-cardiotoxicityin-her2-breast-cancer>
- 29 **Kim DY**, Park MS, Youn JC, Lee S, Choi JH, Jung MH, Kim LS, Kim SH, Han S, Ryu KH. Development and Validation of a Risk Score Model for Predicting the Cardiovascular Outcomes After Breast Cancer Therapy: The CHEMO-RADIAT Score. *J Am Heart Assoc* 2021; **10**: e021931 [PMID: 34369199 DOI: 10.1161/JAHA.121.021931]
- 30 **Curigliano G**, Cardinale D, Suter T, Plataniotis G, de Azambuja E, Sandri MT, Criscitiello C, Goldhirsch A, Cipolla C, Roila F; ESMO Guidelines Working Group. Cardiovascular toxicity induced by chemotherapy, targeted agents and radiotherapy: ESMO Clinical Practice Guidelines. *Ann Oncol* 2012; **23** Suppl 7: vii155-vii166 [PMID: 22997448 DOI: 10.1093/annonc/mds293]
- 31 **Bouwer NI**, Steenbruggen TG, van Rosmalen J, Rier HN, Kitzen JJEM, van Bekkum ML, Tije AJT, de Jong PC, Drooger JC, Holterhues C, Smorenburg CH, Kofflard MJM, Boersma E, Sonke GS, Levin MD, Jager A. Cardiotoxicity during long-term trastuzumab use in patients with HER2-positive metastatic breast cancer: who needs cardiac monitoring? *Breast Cancer Res Treat* 2021; **186**: 851-862 [PMID: 33394273 DOI: 10.1007/s10549-020-06039-w]



Published by **Baishideng Publishing Group Inc**
7041 Koll Center Parkway, Suite 160, Pleasanton, CA 94566, USA
Telephone: +1-925-3991568
E-mail: bpgoffice@wjgnet.com
Help Desk: <https://www.f6publishing.com/helpdesk>
<https://www.wjgnet.com>

